



*Alpha Kappa Alpha Sorority, Incorporated*<sup>®</sup>



REMEMBERING  
**24TH SUPREME BASILEUS**

EVA LOIS  
*Evans*

**SOROR GLENDA GLOVER  
SUPREME BASILEUS**

**AUGUST 1, 2020  
1:00 PM EDT**





*Alpha Kappa Alpha Sorority, Incorporated*<sup>®</sup>



REMEMBERING  
24TH SUPREME BASILEUS EVA LOIS EVANS







# Alpha Kappa Alpha Sorority, Incorporated®



## Order of Program

### *Musical Prelude*

Greetings & Occasion

**Soror Glenda Glover**  
*Supreme Basileus*

Prayer

**Soror Vanessa Rogers Long**  
*Chairman, Special Projects Committee*  
*20th South Eastern Regional Director*

### *24th Supreme Basileus Eva L. Evans Biographic Video*

Special Musical Tribute

**Soror Yolanda Adams**  
*Grammy Award-Winning Gospel Recording Artist*

Reflections

**Soror Mattelia Bennett Grays**  
*18th Supreme Basileus*

**Soror Norma Solomon White**  
*25th Supreme Basileus*

**Soror Carolyn House Stewart**  
*28th Supreme Basileus*

**Soror Dorothy Buckhanan Wilson**  
*29th Supreme Basileus*

### *Presentation of the Administrations of 24th Supreme Basileus Eva L. Evans* *1994-1996 Directorate* *1996-1998 Directorate*

Reflections

**Soror Lucretia Payton Stewart**  
*Chairman, Leadership Development Committee*  
*13th South Atlantic Regional Director*

**Soror Martha L. Perine Beard**  
*Chief of Staff to the Supreme Basileus*  
*23rd Central Regional Director*

**Soror Gloria Stephens Smith**  
*18th Great Lakes Regional Director*

**Soror Alma Ivey Clarke**  
*Former Chairman International Standards Committee*

**Soror Carrie J. Clark**  
*Great Lakes Regional Director*

### *Alpha Kappa Alpha Sorority, Incorporated®* *National Hymn*

Performed by the 67th Virtual Boule Chorale

Tribute Remarks

**Supreme Basileus Glenda Glover**

### **Video Tribute**

*Remembering the Best of Soror Eva L. Evans*

### **In Her Own Words**

*"Jesus Will"*

*Our Beloved 24th Supreme Basileus*  
*Soror Eva L. Evans*





# Alpha Kappa Alpha Sorority, Incorporated®



## REMEMBERING THE LIFE OF 24TH SUPREME BASILEUS

### *Eva Lois Evans*



Dr. Eva Lois Evans was born January 14, 1935 in Memphis, Tennessee and grew up in Detroit, Michigan. As an only child, she developed a strong sense of who she was and what she wanted out of life. Dr. Evans attended Detroit's public schools and went on to earn her Bachelor of Science degree from Wayne State University and both Master's and Doctoral degrees from Michigan State University.

In her home community of Lansing and throughout Michigan, Dr. Evans has broken barriers and accomplished many firsts, including service as the first female deputy superintendent of the Lansing School District, campaign chairman and chairman of the Tri-County United Way, Vice Chairman of the Lansing Board of Water and Light, Chairman of the Lansing Community College Foundation, trustee of the Michigan State University Board of the College of Education, and member of Sparrow Hospital Women's Board of Managers. In addition, she was appointed by the state governor to serve on the Michigan Council for the Humanities and was Chairman of the Michigan Department of Civil Rights.

Dr. Evans served in a number of administrative positions in the Lansing School District, from director of elementary education, to deputy superintendent of schools in charge of instruction. As a leader in the school system, she developed and implemented innovative programs, such as schools of choice and a district-wide talent fair for students and staff. She connected the school district with Lansing Community College and Michigan State University for the 2+2+2 Program, which channels minority students into Michigan State University's College of Engineering. Along with her focus on math and science, Evans created the "Be a Star" performing arts program. These innovative programs and productive partnerships have endured over the years, benefiting countless individuals and shaping practice and policy in education, health care, social services and beyond.



The impact of Dr. Evans' dedication, efforts and talent has also been experienced throughout the world. She served Alpha Kappa Alpha Sorority, Incorporated in a variety of influential and key roles, including serving as the Great Lakes Region 16th Regional Director and in the highest position in the Sorority, as the 24th International President from 1994-1998. She established the theme, "Building the Future: The Alpha Kappa Alpha Strategy: Making the Net Work." In implementing this vision, she networked with major entities in the United States including Elizabeth Dole of the American Red Cross and the Pillsbury Corporation for a Partnership In Mathematics and Science (PIMS), which became her administration's signature program. She also developed a partnership with the American Red Cross to educate people about HIV/AIDS and to increase the number of African Americans on the bone marrow registry. She traveled from coast to coast and all points in between speaking about her beloved, Alpha Kappa Alpha, and her home chapter, Delta Tau Omega Chapter of Alpha Kappa Alpha Sorority, Incorporated.



Dr. Evans was interviewed by The History Makers, the Nation's Largest African American Video Oral History Collection, as part of the Alpha Kappa Alpha Centennial Boulé 2008 celebration. She was also among the first group of individuals profiled on The Black Success Network, a high tech Michigan-based startup that shares stories of African Americans who are making outstanding contributions in their workplace and communities across all disciplines and professions. As an educational icon and an accomplished humanitarian, Dr. Eva L. Evans dedicated her career to developing best practices for providing opportunities to underserved populations.



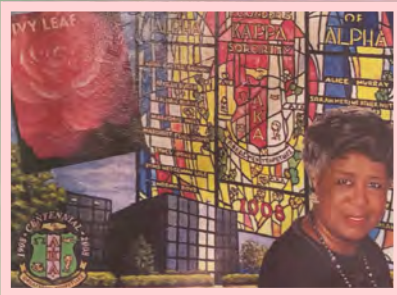


# Alpha Kappa Alpha Sorority, Incorporated®



## REMEMBERING THE LIFE OF 24TH SUPREME BASILEUS

### *Eva Lois Evans*



Among her many honors, Evans received the YWCA's Diana Award for Excellence in Education, the Lansing Chamber of Commerce ATHENA Leadership Award, the NAACP's Educator of the Year Award, the Crystal Apple Award for Education from Michigan State University and the Applause Award from the Lansing Center for the Arts. In 2012, the Capital Area United Way awarded Evans with its highest honor, the Walter A. Campbell Award, for her many years of active, valuable service. She served as President of Lansing Woman's Club, an organization founded in 1874 to study Art & Literature, Science, History and Education. Evans was inducted into the Michigan Women's Hall of Fame in 2005.

Dr. Evans was the 2017-2018 Wharton Center for Performing Arts, Inner Circle board president, a volunteer organization that donates time to the arts in mid-Michigan. In 2018, the Lansing School District named a school in her honor, The Dr. Eva L. Evans Welcome Center, designed to help educate, strengthen and unify the community it serves.

Continuing her life of service, Dr. Evans was a Charter member the Lansing/East Lansing Chapter, The Links, Incorporated. She loved singing with The Earl Nelson Singers Company in Lansing, one of her favorite organizations. Dr. Evans' life and legacy of service were grounded by her faith in God. She served humbly and enthusiastically in several capacities at Trinity AME Church in Lansing. Most recently chair of the Trinity A.M.E Church 150th Anniversary Souvenir Program Book. Organizations that were blessed to have her as a member reaped the benefit of having her pour her heart out for the good.

Dr. Evans loved to entertain and host dinner parties. Those who were fortunate, dined on foods that ranged from French cuisine to Chitlins' from North Carolina. She liked beautiful fashions and dressed exquisitely. Shopping was her favorite pastime activity along with watching British films and YouTube which became her go to place for all types of music. She traveled extensively, including Hawaii, Alaska, Europe, South Africa, Egypt, Israel, New Zealand, Australia, Brazil, China, The United Arab Emirates and other foreign nations. No matter where she traveled, "The Big L" (as she called Lansing), was always just a thought away.

**"The women of Alpha Kappa Alpha were the best and brightest women in this country, in the world - for that matter; and if there were problems to be solved, particularly among African Americans, we were in the best position to be able to solve them."**

**-Soror Eva L. Evans**







# Alpha Kappa Alpha Sorority, Incorporated®



## DIRECTORATE 1994-1996



**Soror Evan L. Evans**  
*Supreme Basileus*



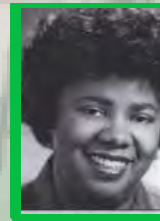
**Soror Norma White**  
*First Supreme Anti-Basileus*



**Soror Lesa Woodson**  
*Second Supreme Anti-Basileus*



**Soror Linda White**  
*Supreme Grammateus*



**Soror Yvonne Perkins**  
*Supreme Tamiouchos*



**Soror Contance Holland**  
*Supreme Parliamentarian*



**Soror Jacquie Jones**  
*Undergraduate Member-At-Large*



**Soror Krista Woods**  
*Undergraduate Member-At-Large*



**Soror Wilma H. Tootle**  
*North Atlantic Regional Director*



**Soror Doris R. Asbury**  
*Mid-Atlantic Regional Director*



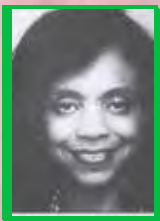
**Soror Lucretia Payton Stewart**  
*South Atlantic Regional Director*



**Soror Patricia Petty**  
*Great Lakes Regional Director*



**Soror Vanessa R. Long**  
*South Eastern Regional Director*



**Soror Martha L. Perine**  
*Central Regional Director*



**Soror Alberta Jones**  
*Mid-Western Regional Director*



**Soror Carmelita Smith**  
*South Central Regional Director*



**Soror Cornelia H. Banks**  
*Far Western Regional Director*



**Soror Phyllis E. Robinson**  
*International Regional Director*





# Alpha Kappa Alpha Sorority, Incorporated®



## DIRECTORATE 1996-1998



**Soror Evan L. Evans**  
*Supreme Basileus*



**Soror Norma White**  
*First Supreme Anti-Basileus*



**Soror Daria L. Ibn Tamas**  
*Second Supreme Anti-Basileus*



**Soror Linda White**  
*Supreme Grammateus*



**Soror Yvonne Perkins**  
*Supreme Tamiouchos*



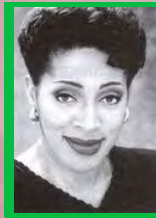
**Soror Contance Holland**  
*Supreme Parliamentarian*



**Soror Toya G. Corbett**  
*Undergraduate Member-At-Large*



**Soror Nyanza L. Davis**  
*Undergraduate Member-At-Large*



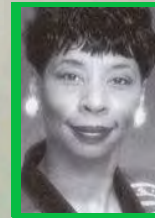
**Soror Wilma H. Tootle**  
*North Atlantic Regional Director*



**Soror Doris R. Asbury**  
*Mid-Atlantic Regional Director*



**Soror Lucretia Payton Stewart**  
*South Atlantic Regional Director*



**Soror Patricia Petty**  
*Great Lakes Regional Director*



**Soror Vanessa R. Long**  
*South Eastern Regional Director*



**Soror Martha L. Perine**  
*Central Regional Director (96-97)*



**Soror Peggy Lewis LeCompte**  
*Central Regional Director (97-98)*



**Soror Alberta G. Jones**  
*Mid-Western Regional Director*



**Soror Polly J. Turner**  
*South Central Regional Director*



**Soror Grace B. Strauther**  
*Far Western Regional Director*



**Soror Phyllis E. Robinson**  
*International Regional Director*









# Alpha Kappa Alpha Sorority, Incorporated®



## THE EXCELLENCE DIRECTORATE 2020-2022

**Soror Glenda Glover**  
*Supreme Basileus*

**Soror Danette Anthony Reed**  
*First Supreme Anti-Basileus*

**Soror Jennifer King Congleton**  
*Mid-Atlantic Regional Director*

**Soror Jasmyne E. McCoy**  
*Second Supreme Anti-Basileus*

**Soror Carolyn Randolph**  
*South Atlantic Regional Director*

**Soror Chelle Luper Wilson**  
*Supreme Grammateus*

**Soror Carrie J. Clark**  
*Great Lakes Regional Director*

**Soror Gayle Miles-Scott**  
*Supreme Tamiouchos*

**Soror Mitzi Dease Paige**  
*South Eastern Regional Director*

**Soror Bonnie Murdah**  
*Supreme Parliamentarian*

**Soror Joya Hayes**  
*South Central Regional Director*

**Soror Alysse Guerrier**  
*Undergraduate Member-At-Large*

**Soror Sonya L. Bowen**  
*Central Regional Director*

**Soror Jasmine Williams**  
*Undergraduate Member-At-Large*

**Soror Twyla Woods-Buford**  
*Mid-Western Regional Director*

**Soror Mary Bentley Lamar**  
*North Atlantic Regional Director*

**Soror Shelby Robinson-Boagni**  
*Far Western Regional Director*

**Soror Joy Elaine Daley**  
*International Regional Director*



## 24TH SUPREME BASILEUS EVA L. EVANS MEMORIAL TRIBUTE COMMITTEE

**Soror Glenda Glover**  
*Supreme Basileus*

**Soror Carrie J. Clark**  
*Great Lakes Regional Director  
Chairman*

**Soror Jennifer King Congleton**  
*Mid-Atlantic Regional Director*

**Soror Mitzi Dease Paige**  
*South Eastern Regional Director*

**Soror Gloria Stephens Smith**  
*18th Great Lakes Regional Director*

**Soror Phyllis E. Robinson**  
*22nd Great Lakes Regional Director  
2nd International Regional Director*

**Soror Charlene Truitt Nelson**  
*27th Great Lakes Regional Director*

**Soror Lucretia Payton Stewart**  
*Chairman, Leadership Development Committee  
13th South Atlantic Regional Director*

**Soror Vanessa Rogers Long**  
*Chairman, Special Projects Committee  
20th South Eastern Regional Director*

**Soror Kimberly Esmond Adams**  
*Chairman, Risk Management Task Force  
Special Assistant to the Supreme Basileus*

**Soror Nicole H. Barrett**  
*Deputy Director  
Alpha Kappa Alpha Sorority, Inc.®*



*Alpha Kappa Alpha Sorority, Incorporated®*



5656 SOUTH STONY ISLAND AVENUE  
CHICAGO, IL 60637